



Beaufort County
Public Works
Stormwater Infrastructure
Project Summary

Project Summary: Stellata Lane and Grandiflora Lane

Activity: Routine/Preventive Maintenance

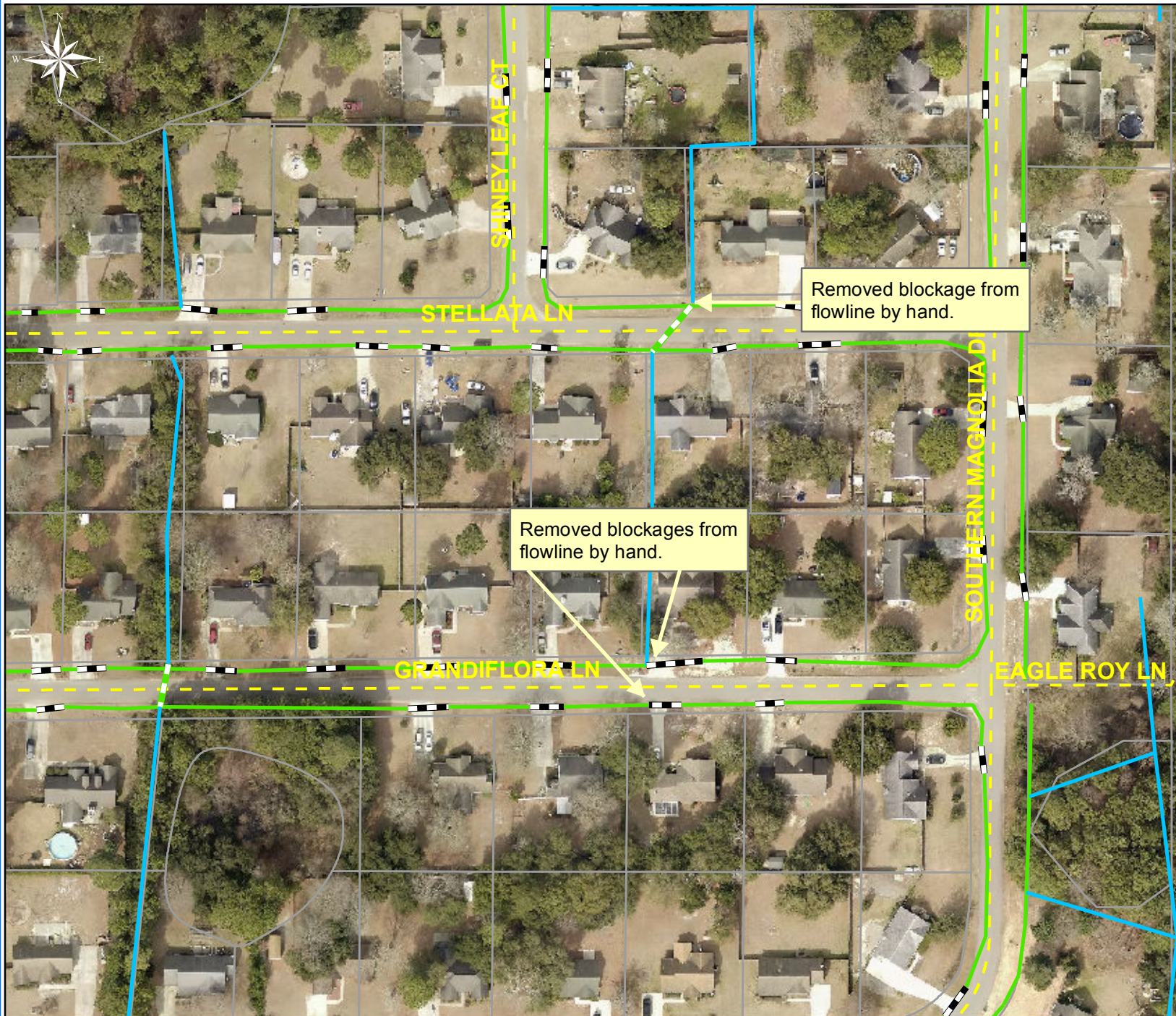
Narrative Description of Project:

Removed blockages from flowline by hand.

Completion: Jul-15

2016-521 / Stellata Ln and Grandiflora Ln	Labor Hours	Labor Cost	Equipment Cost	Material Cost	Contractor Cost	Indirect Labor	Total Cost
AUDIT / Audit Project	0.5	\$11.75	\$0.00	\$0.00	\$0.00	\$6.62	\$18.36
CCO / Channel - cleaned out	16.0	\$346.74	\$14.16	\$7.91	\$0.00	\$220.56	\$589.37
HAUL / Hauling	4.0	\$89.12	\$31.96	\$9.04	\$0.00	\$57.68	\$187.80
2016-521 / Stellata Ln and Grandiflora Ln Sub Total	20.5	\$447.61	\$46.12	\$16.95	\$0.00	\$284.86	\$795.53
Grand Total	20.5	\$447.61	\$46.12	\$16.95	\$0.00	\$284.86	\$795.53

(Pictures Not Available)



Project: Stellata Lane & Grandiflora Lane

Activity: Routine/ Preventive Maintenance

Project #: 2016-521

Township: Lady's Island

Completed: July 2015

Legend

Drainage Type

- Access Pipe
- Bleeder Pipe
- Channel Pipe
- Channel
- Stream
- Crossline Pipe
- Driveway Pipe
- Lateral
- Lateral Pipe
- River
- Road Pipe
- Roadside
- Roadside Pipe

0 25 50 100 150 200 Feet

1 inch = 120 feet

Prepared By: BC Stormwater Management Utility

Date Print: 07/22/2015

File: C:\project summaries map\Stellata Lane & Grandiflora Lane_2016-521